

MONTHLY MEMBERSHIP PROGRESS REPORT

LOCATION TEXAS

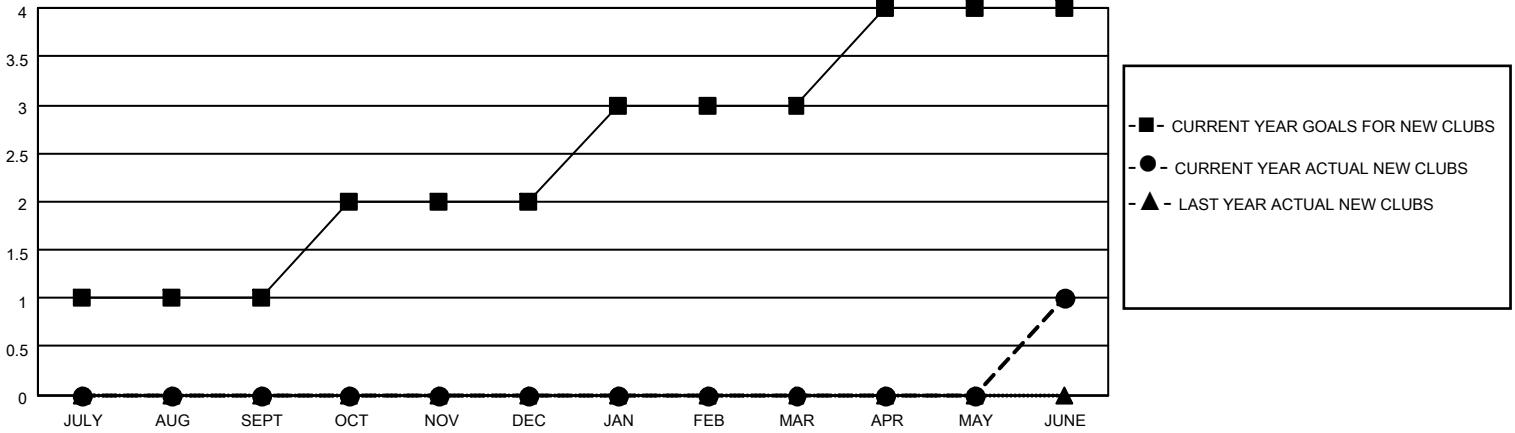
District 2 E2

Results as of: 6/30/2023

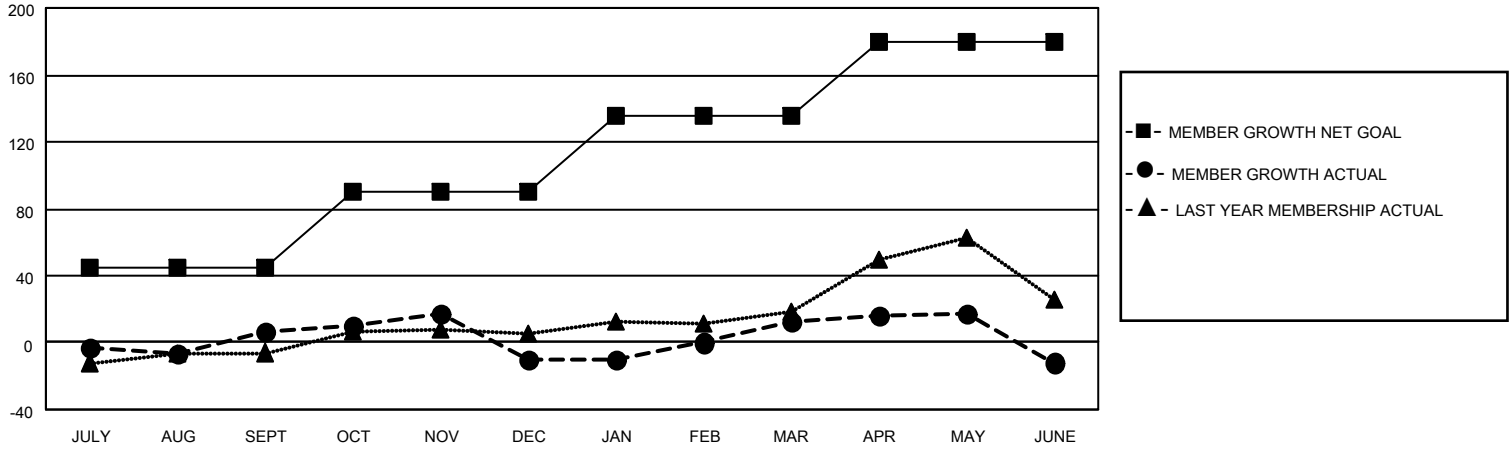
Clubs			
RESULTS FOR 2022-2023			
QUARTER	NEW CLUB GOAL	NEW CLUBS	DROPPED CLUBS
JULY/AUG/SEPT	1	0	1
OCT/NOV/DEC	1	0	1
JAN/FEB/MAR	1	0	0
APR/MAY/JUNE	1	1	1

Members			
RESULTS FOR 2022-2023			
QUARTER	MEMBER GROWTH NET GOAL	MEMBER GROWTH ACTUAL	DROPPED MEMBERS ACTUAL (including transfers)
JULY/AUG/SEPT	45	60	42
OCT/NOV/DEC	45	51	62
JAN/FEB/MAR	45	63	35
APR/MAY/JUNE	45	97	112

GOALS AND ACTUAL NEW CLUBS CUMULATIVE



GOALS AND ACTUAL MEMBERS CUMULATIVE



DROPPED CLUBS: 3

41 CLUBS OF 58 ADDED 1 OR MORE NEW MEMBERS

GENDER DISTRIBUTION

MALE	1,049 (61.60%)
FEMALE	654 (38.40%)
NON BINARY	0 (0.00%)
PREFER NOT TO ANSWER	0 (0.00%)

DROPPED MEMBERS

[CLICK HERE FOR CUMULATIVE MEMBERSHIP DATA](#)

DECEASED	29
CLUB CANCELLED	0
OTHER	223
TOTAL	252

TOTAL FAMILY UNIT MEMBERS	225
FAMILY MEMBERS PAYING HALF DUES	113